

Eicher Pro 1000 Reefer Series

GO PRO

Model	Eicher Pro 1110XP Refrigerated Truck	Eicher Pro 1059XP Refrigerated Truck
GVW (Kgs)	12976	7200
Wheelbase (mm)	4300	3350
Engine	E494 4Cyl 4V CRS engine with Volvo Group EMS 3.0	E483 4 cyl 2 valve CRS
Max Power	101 kw (~135HP) @ 2600 rpm	70 kw (~95 HP) @ 2600 rpm
Max Torque	450 Nm @ 1200-1800 rpm	300Nm @ 1200-1800 rpm
Gear Box	Eicher 4M6S(6 Forward + 1 reverse) with hybrid GSL	Eicher 3M5D (5 Forward + 1 reverse) with hybrid GSL
Clutch Size (mm)	310	275
Gradeability (%)	26	24
Ground Clearance (mm)	330	230
Fuel Tank (Lts)	190	100
Battery	12V- 100 Ah	12V- 70 Ah

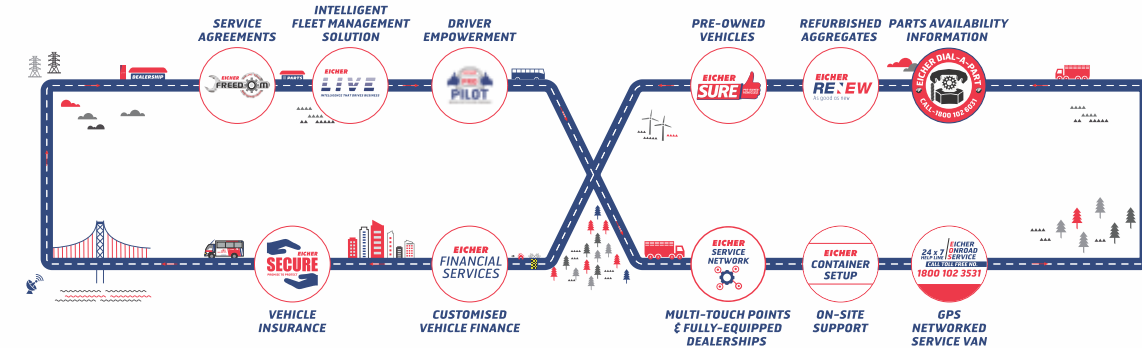
Container and Refrigeration Unit Details

Parameter	Eicher Pro 1110XP Refrigerated Truck	Eicher Pro 1059XP Refrigerated Truck
External Body	MS Corrugated Panel	MS Corrugated Panel
Internal Body	Food Grade Stainless Steel	Food Grade Stainless Steel
Insulation	PUF of 125mm thickness on all sides	PUF of 125mm thickness on all sides
Floor	Aluminum T-Grating	Aluminum T-Grating
External Dimensions(mm)	6100 x 2135 x 2290	4270 x 2135 x 2290
Internal Dimensions (mm)	5750 x 1850 x 1950	3920 x 1850 x 1950
Reefer Unit	Carrier Oasis 250	Carrier Oasis 250
Operating Temperature Range	-25 °C to +25 °C	-25 °C to +25 °C
Ambient Temperature	+50 °C	+50 °C
Auxiliary Fuel Tank (Ltr)	60	60
Additional Battery	12V (separate for reefer unit)	12V (separate for reefer unit)
Warranty On Refrigeration Unit	2 Years *	2 Years *
Warranty On Refrigerated Container	3 Years *	3 Years *

*Warranty on refrigeration unit and additional battery applicable from the date of installation on chassis and terms are governed by the respective manufacturers.



EICHER SERVICE AVAILABLE ANYWHERE, ANYTIME



*CAUTION - *Do not weld or drill on chassis frame. *Accessories and features shown in picture or elsewhere may not constitute standard fitment. *Weight mentioned is for standard configuration with standard body sizes and will change due to optional fitments. *As a result of continuous research and innovations carried out, specifications are merely indicative and are subject to change without notice"

VE COMMERCIAL VEHICLES
A VOLVO GROUP AND EICHER MOTORS JOINT VENTURE

VE COMMERCIAL VEHICLES LTD.
Registered Address - 3rd Floor Select Citywalk,
A-3 District Centre, Saket, New Delhi 110 017, India
CIN - U74900DL2008PLC175032
Email - info@vecv.in
Website : http://www.vecv.in

AUTHORIZED DEALER

Eicher Pro 1000 SERIES REEFER TRUCKS

TRUCKS AND BUSES

THE PROFITABLE & RELIABLE READY TO USE EICHER PRO 1000 REEFER SERIES









Mileage ka Badshah



Eicher Pro 1000 Reefer Series

The testimony of unmatched mileage leading to high Vehicle Lifetime Profitability

Eicher Pro 1000 Reefer Series is one of the most profitable product series of the Eicher PRO philosophy. It has the highest rated payload in its category, robust and rugged aggregates that ensure high profitability and durability and cabin with superior driving comfort, while retaining its best in class fuel efficiency. Aptly known as the Mileage Ka Badshah, Eicher Pro 1000 Reefer Series ensures high profitability and prosperity for its owner, with the benefits of earning from day one.

-  Best-in-class fuel efficiency
-  High rated payload
-  Fast pick-up and acceleration
-  Superior cabin comfort
-  Low maintenance Superior uptime
-  High resale value



EICHER HIGH PERFORMANCE CRS ENGINE



	Pro 1110XP Reefer	Pro 1059XP Reefer
Engine	E494 4Cyl 4V CRS engine with Volvo Group EMS 3.0	E483 4 cyl 2 valve CRS
Max Power Output	101 kw (-135HP) @ 2600 rpm	70 kw (-95 HP) @ 2600 rpm
Max Torque Output	450 Nm @ 1200-1800 rpm	300Nm @ 1200-1800 rpm
Emission	BSIV	BSIV

- Proven technology
- Best in class fuel efficiency
- Optimized power and torque
- Ease of service and low maintenance
- Long oil drain intervals

Eicher Fully Built Reefer Truck Advantage

- Earn from Day One
- Ready-to-Use Reefer Truck
- Easy Finance on Complete Truck
- One Stop Warranty & Service Solution
- Higher Fuel Economy, Lower Maintenance Cost
- Highly Reliable and Durable with OEM Product Quality
- ARAI Regulated Container from ISO Certified Vendor
- Separate Fuel Tank for Refrigeration Unit



Eicher Reefer Truck Warranty & Service

Truck Model	Pro 1059XP	Pro 1110XP
Standard Warranty - Vehicle	1 year, unlimited kms	2 years, unlimited kms
Engine & Gear body	3 years, unlimited kms	4 years, unlimited kms
Reefer container warranty	3 years	3 years
Refrigeration Unit warranty	2 years	2 years
Refrigeration Unit service schedule	• 1st Service : 250 hrs / 3 months • 2nd Service : 750 hrs / 6 months • 3rd Service : 1500hrs / 9 months • 4th Service : 2250 hrs / 12 months	

The Eicher Pro Series is a range of next-generation trucks and buses from 4.9 to 49 tons, designed to take the industry to a new **PRO**fessional level. It brings together the Volvo Group's world-class technology and processes and the frugal engineering and local expertise of Eicher. In keeping with the 'Go **PRO**' philosophy, the Eicher **PRO** Series **PRO**promises to deliver higher **PRO**fitability and more **PRO**sperity to its customers. This it fulfills through best in class fuel efficiency, superior uptime and better overall vehicle performance.

Other Features



EasyCOLD Microprocessor Control System:

- Automatic Start / Stop
- City Speed
- Automatic Unit Pre-trip
- Engine Coolant Temperature
- Battery Voltage Indicator
- Road and Electric Standby Hours
- Maintenance Interval Hours

Safety Indicators

- Audible Alarm - Box temperature out of set point range
- High Coolant Temperature
- High Refrigerant Pressure
- Low Refrigerant Pressure
- Low Battery Tension
- Low Oil Pressure

Control Unit



1. Reefer Temp Control Unit

Electricals



2. Stand by electric supply connector
3. Additional 12V battery for reefer unit operation

Water Drainage



4. Drainage pipe for water accumulated in the reefer container

CABIN



Superior aesthetics



Cabin with new and modern styling



Modern dual tone instrument panel



Beige interiors for premium feel



6 din multi-utility dashboard

Superior driving comfort



Ergonomically designed hybrid gear shift lever



Digital instrument panel



Tiltable and telescopic steering wheel



Ergonomically designed 4 way adjustable and comfortable seat

Superior convenience



Lockable glove box with tray



Easily accessible door trim pockets



Paper holder in sun visor



Engine inspection lamp



12V Socket with multi point mobile charger



Soft grip steering wheel (PU material)

Contemporary styling and aesthetics

High comfort and safe cabin with value added convenience and utility features

6 din, dual tone, modern and sleek instrument panel

CED painted cabin for long gloss life, long salt life and perforation life

Other superior features



Bigger metallic bumper for higher safety



Dual stage mirror for better visibility



Clear lens integrated headlamps with fog lamps



Anti corrosion fuel tank for longer life



CED painted chassis frame for long life



Strong close pitch cargo body for greater strength

Applications

Eicher Pro 1059XP & 1110XP Refrigerated Truck is suited for varied applications



Vegetables



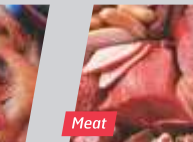
Fruits



Ice Cream



Sea Foods



Meat



Dairy Products



Processed Food

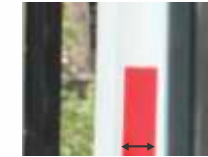


Pharma Products

Reefer Truck Body & Container Interior



Ladder Frame for easy climbing



125 mm PUF Insulation



Food Grade Stainless Steel



Service window on container door, for better loading without losing temp



MS Corrugated Container



LED Lamps inside for better visibility



Aluminum T-Section on front panel & Floor for better air circulation and Drain Pipe for Easy Drainage



Foldable ladder for ease entry into the container

Reefer Unit Features

- Safest & most functional 125mm PUF insulated container body for chilled products
- Designed for transporting products under controlled temp
- Internal Body: Food grade SS
- Outside Body: MS corrugated container
- Aluminum T-Grating on Floor & Front for better air circulation
- Service window on container door, for better loading without losing temperature

Reefer Unit Features

Diesel drive unit with a belt driven compressor with separate fuel tank

Meant for high ambient temp about +50°C

Cargo carrying temp range -25°C to +25°C

OASIS 250: Proven all round performance for medium sized trucks

Automatic start/stop fuel saver. High power alternator

Refrigerant R404a High refrigeration capacity

Maintenance friendly operation

Additional 12V battery for reefer unit operation & Stand by electric supply connector (Dual power mode)

OASIS 250 Reefer Truck



- **Reliable high ambient temperature performance (+50 deg c)** meaning you can maintain product quality even in extreme climates
- **Reliable starting in high ambient temperatures** meaning you can count on your unit every time
- **Superior air circulation** gives you faster pulldown and temperature recovery, even with multiple stops and door openings
- **User-friendly EasyCOLD® microprocessor control** for a unit that is simple to operate
- **Resistance to harsh climates** parts tested against dust, heat, UV radiation, vibration ensure you enhanced product protection.

Cargo Analysis: Temperature Mapping

Product	Temperature Range
Meat/Poultry	-18°C to -20°C
Ice Cream	-18°C to -22°C
Green Peas	-18°C to -20°C
Sweet Corn	-18°C to -20°C
Fruit Pulp	-18°C to -20°C
Pharma (Vaccines)	+2°C to +8°C
Apples	+2°C to +4°C
Flowers	+2°C to +4°C
Litchies	+2°C to +6°C
Chocolates	+15°C to +25°C
Pharma (Others)	+15°C to +18°C
Butter	-4°C to -10°C

Freezing Zone

Chilling Zone

Controlled Atmosphere